



Investing in Edmonton's Future



Kids Kottage Foundation
Annual Report 2019-2020

An Update from the Board Chair and Executive Director



I continue to be inspired everyday by the resilience and bravery of the clients who come to us for support, and the children who stay in our care.

- Janine Fraser

With the warmer weather and sunshine, it is difficult to imagine that the world is still in the grasp of a global pandemic and crushing economic crisis.

People from all walks of life, and corners of the world have been affected by COVID-19.

While many impacts have been felt by people all over our province, country and world, none have been more harshly impacted than the most vulnerable in our communities.

One thing that has not changed is Kids Kottage Foundation's commitment to our critical work during this turbulent time and into the future. Supporting our community's most vulnerable infants, children and their caregivers remains our top priority.

Kids Kottage Foundation continues to add significant value to the community with our 24-hour, seven days a week, 365 days a year, crisis line. We are providing shelter, food, clothing, nurturing, and trauma-informed care to infants and children up to 10 years of age. Immediate support is being provided to caregivers experiencing crisis, homelessness, addictions, poverty, health, and food insecurity through our Follow-Up Program.

Kids Kottage Foundation is positioned to maintain resiliency despite current challenges while delivering on our value statement - keeping infants and children safe. You can count on the dedication of the Kids Kottage Foundation Board of Directors, subcommittees, leadership, and the Kids Kottage team to build a safe and robust future for our collective community.

Rajesh Ramakrishnan
Board Chair
Kids Kottage Foundation



Janine Fraser
Executive Director
Kids Kottage Foundation



Annual Report 2019/2020

Follow us on
@KidsKottageYEG



Twitter



Facebook



Instagram

Contents



Program Overview	04
Development Report	06
Fundraising Events	08
Community Transition Program Overview	10
2019/20 Statistics	12
Testimonials	14
Continuing Support	16
Board of Directors	17
Earth Angels + Partners	18

Program Overview

As a 72-hour crisis prevention shelter, we often get asked, “How could you possibly solve all their challenges in just 72 hours?!” And the answer is simple. We can’t. But, our services span far beyond 72 hours. Not only is Kids Kottage a safe haven to children, but our staff continue to walk alongside families as they work toward their goals in our programs. Less than 3% of families who use our services require government intervention afterward. These programs enable families to become stronger together and create a brighter future, breaking the cycle of intergenerational trauma and building resilient members of our community and society.

Crisis Line

This is the first point of contact for most of our families. This role provides resources, along with screening the level of need families have. Caregivers that contact the Kottage are met with support and encouragement.

Crisis Prevention Shelter

This is the foundation of our agency. Our child care workers, including our cook and housekeeper, are who make the children’s stay at the Kottage like home, keep them safe, play with them, and take care of their needs while the parents and caregivers are connected with the resources they need to move past the current crisis. Throughout 2019-2020, Kids Kottage provided 2,000 safe nights to children in need.



Follow-Up Program

Once the crisis has passed, our follow-up worker walks alongside families to help them identify their goals, connect them with resources our community transition worker has found, and ultimately support families however they need in order to create a stronger, more resilient future. Together, the follow-up worker and families will identify the deeper issues that can contribute to ongoing or new crises and provide support in finding a solution.

Community Transition Program

The community transition program interfaces and collaborates with other community agencies. We know that we are stronger together, and the best way for us to make an impact is to work together. Our community transition worker connects with other organizations and resources within our Edmonton community enabling us to connect parents and caregivers with extensive resources that will best serve and aid them along their journeys.

Basic Shelf Program

This program is a 12-week series of workshops. With a small group of attendees, participants are taught how to cook and shop for food on a limited budget. The program is based on the strategy of keeping a ‘basic shelf’ of ingredients in your home. Throughout the program, attendees learn how to create a variety of meals that are nutritious and affordable. Whenever an item is used, or runs out from the basic shelf, attendees will know to replenish it at the next grocery shop trip. Participants also receive “The Basic Shelf Cookbook” outlining the basic shelf of ingredients, with tips on how to shop for food, store food, and cook with a limited amount of money that they can refer back to once the program is over.

Fund Development Report



Each year, Kids Kottage fundraises over half of our \$1.3 million operating budget. That would not be possible without the strong foundation of loyal and generous donors, funders, and supporters who are with us every step of the way. This year was one of growth and change for us. We are more grateful than ever for those who have stayed with us on this journey, and for the new partnerships we have made along the way.

Our Earth Angels are the cornerstone of our fund development program, committing to an annual financial contribution and acting as a source of reliable and sustainable support. They also support us in other ways, from volunteering at the Kottage to answering calls at Radiothon. We are so grateful for our two Earth Angels, Mammoet and Brookfield Residential, as well as the Government of Alberta for being significant contributors to the support we are able to provide to Edmonton's most vulnerable.

This year was filled with a number of people and organizations stepping up to support Kids Kottage in big, and heartfelt ways. A few we wanted to highlight include the Quilliam Family, Canadian Home Builders Association (CHBA), J. Percy Page High School, and community leaders from a variety of organizations who worked together to renovate our playground.

Last summer we were made aware our playground needed renovations in order to be fully useable for our children. In our time of need, community leaders from Canadian Western Bank, CIBC, GoAuto, North American Construction Group, and Calmont Volvo Truck Centre each played a role in organizing and donating a total of \$40,000 to renovate our playground and ensure our children were able to fully enjoy the outside play area.

Additionally, the Qulliam Family has been a huge supporter over the years, and once again funded our entire Basic Shelf Program. They also increased their donation to support our plans for a sensory room. Thanks to their support, we were able to include the build-out of a sensory room, or “Zen Den” as we like to call it, during the renovations CHBA generously completed free of charge for the Kottage. In the first few days of October 2019, CHBA not only built out a sensory room, they completely renovated our interior courtyard, intake foyer, and staff room, and painted. Further to this,

the contractors continue to renovate or fix what is needed at the Kottage well after the renovations were completed in October.

In November, the students and staff from J. Percy Page High School selected Kids Kottage to be the recipient of the funds raised throughout their annual Bike-A-Thon. This was a beautiful illustration of young people committing to keep infants and children safe. They raised over \$47,000 to support Kids Kottage.

This year has also allowed us the opportunity to develop and deepen relationships with corporate donors, as well as other organizations. We are so grateful for every single donor, each guest at our events, purchasers at our auctions, and volunteers who make it possible for us to continue to support families in our community.

We cannot thank you enough for helping us keep these infants and children safe and their caregivers strong. Together we are making a difference.

Janine Fraser

Janine Fraser

Executive Director
Kids Kottage



Total of \$40,000 was donated to renovate our playground and ensure our children were able to fully enjoy the outside play area.



Kids Kottage Breakfast

Raised over \$17,500

Each year, our Kottage Breakfast presents a unique, early morning opportunity to start the day with inspiration. This breakfast event not only provides the opportunity to network with like-minded community leaders, but it also gives the Kottage an opportunity to share our mission and vision and how we can all work together to create a stronger, more resilient Edmonton community.

From politicians to local business people and philanthropists, we strive to offer our guests the chance to listen to, and learn from, key-note speakers from all walks of life and gain a new perspective on business, philanthropy, and everyday life. The 2019 event raised over \$17,500 for Kids Kottage Foundation.



Imagine Gala

Raised over \$134,000

The Imagine Gala, Kids Kottage's signature fundraising event, was once again a great success. The 20th anniversary Mary Poppins themed event, like the Imagine Galas before, was a sophisticated, elegant evening attracting a very generous audience. For the first time in its history, the Imagine Gala sold out a month before the actual event. This spoke volumes to the hard work put in by all parties involved contributing to the overall success. Thanks to the continued support of our community and loyal supporters, we raised over \$134,000.





Radiothon

Raised over \$128,000

Each year, Kids Kottage hosts the annual Radiothon. For the entire month of December, we work in partnership with our friends at Shine FM and the Light AM to raise awareness for the Kottage, and the vital role donor support plays in enabling us to continue to provide invaluable services to Edmonton’s most vulnerable. In this cornerstone event, our community rallies in a way that far exceeds what we expect, and 2019 was no different. The community donated over \$128,000 in support of our efforts to keeping children safe and families strong.

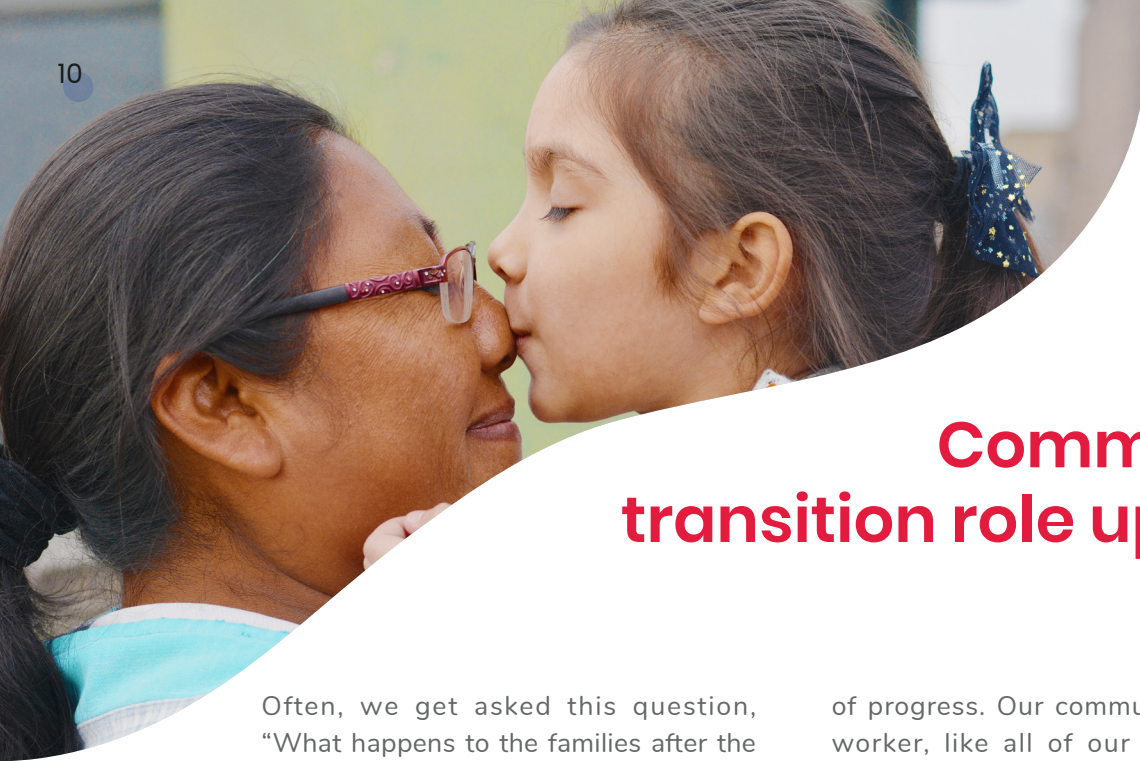


For the Love of wine

Raised over \$38,000

For the Love of Wine, Kids Kottage’s Valentine event, is a night of elegance and refined romance featuring the best wines Italy has to offer thanks to our presenting sponsor, Color de Vino. Fine wine, accompanied by great foods, and entertainment, made it a night to remember. The committee worked hard to secure sponsorships and restaurant participation to create a successful event in 2020 raising over \$38,000 for Kids Kottage.





Community transition role update



Often, we get asked this question, “What happens to the families after the children leave the Kottage’s care?” And our community transition worker is a part of the answer. This integral role, created in 2018, assists and empowers families to build a more sustainable and resilient future through community connections. Over the past year, our community transition worker has worked closely with families who have reached out to us for help after the children have left our care. This position has, and continues to play a pivotal role in helping families overcome barriers by building relationships, regularly checking-in, providing encouragement and motivation, coordinating appropriate referrals, and partnering with other organizations and agencies to ensure families are continuing along the path

of progress. Our community transition worker, like all of our Kottage team members, goes above and beyond to ensure that families receive all of the resources needed to build a strong and resilient future.

In 2019, Kids Kottage built relationships with 34 agencies that can provide additional services our clients might need. These partnerships provide tremendous value to us and our families. It bridges gaps between families, and the resources they need, and prevents the duplication of services throughout our community. Together, we are working towards bettering the well-being of these families and helping them build a stronger foundation for their future and the Edmonton community as a whole.

Partnerships made

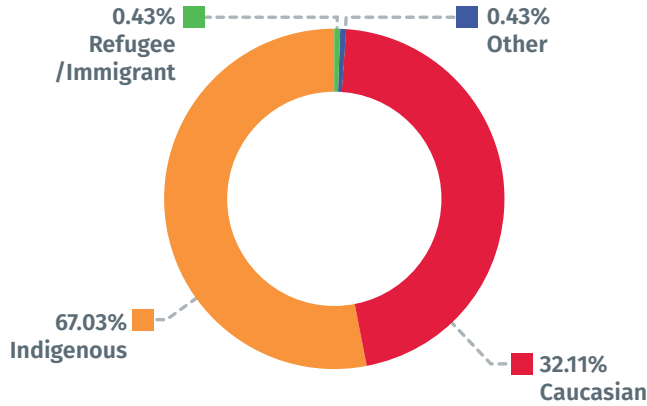


- Today Centre
- Institute for the Advancement of Aboriginal Women (IAAW)
- Catholic Social Services 2nd Stage Shelter
- Catholic Social Services, Immigration and Settlement Services
- KARA Community Resources Centre
- Edmonton Mennonite Centre for New Comers (North Side)
- Edmonton Mennonite Centre for New Comers (South Side)
- Edmonton Mennonite Centre for New Comers (West Side)
- Norwood Child and Family Resource Centre
- Alberta Health Services (North Side)
- Bent Arrow Traditional Healing Society
- Sexual Assault Centre of Edmonton
- Pride Centre of Edmonton
- Family Futures Resource Network
- Amity House Dickins Field
- Red Road Healing Society
- Oliver Centre



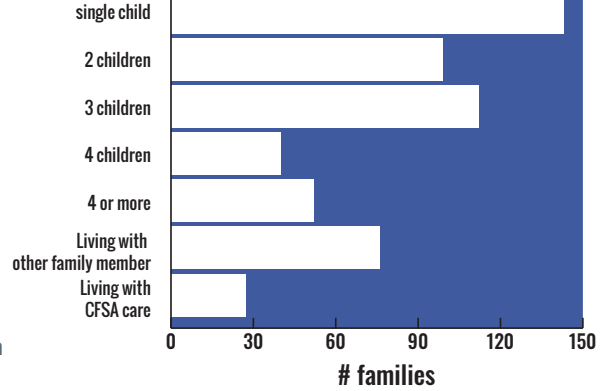
- Terra Centre
- Bissel Centre
- ABC Head Start Society
- E4C
- Edmonton John Howard Society
- The Canadian Native Friendship Centre
- Multicultural Health Brokers
- YMCA Welcome Village
- Employabilities
- Boyle Street Community Services
- Canadian International Immigrant & Refugee Support Association (CIIRSA)
- The Family Centre
- The Salvation Army
- West View Primary Care (Spruce Grove)
- YWCA Edmonton
- Caregiver Alberta

KOTTAGE CLIENTS IDENTIFY AS:

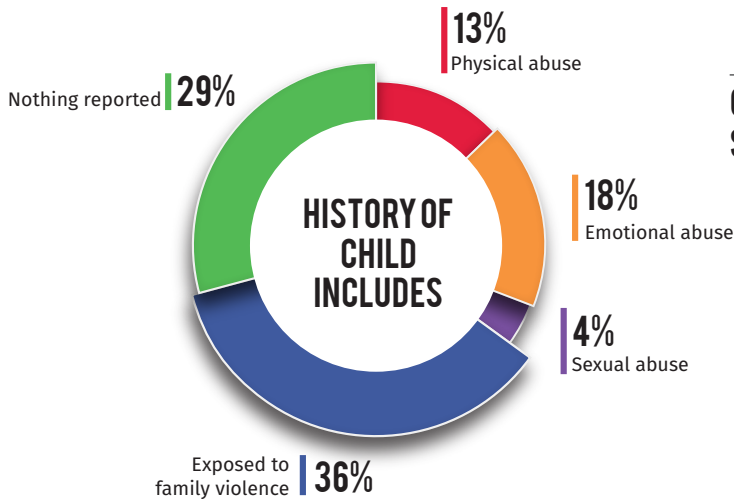


children per household

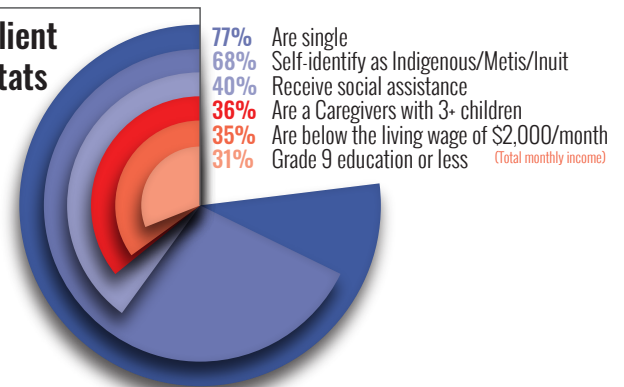
HOUSEHOLD TYPES



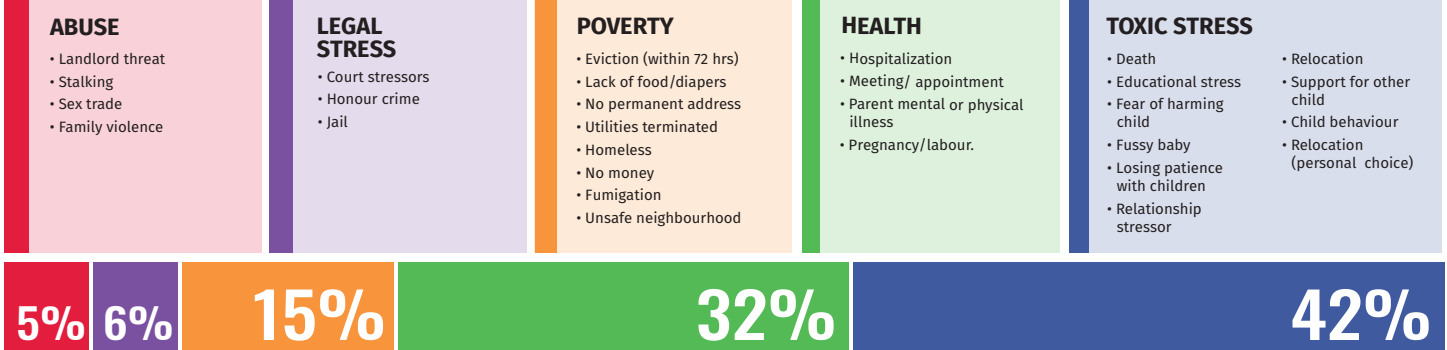
HISTORY OF CHILD INCLUDES



Client Stats



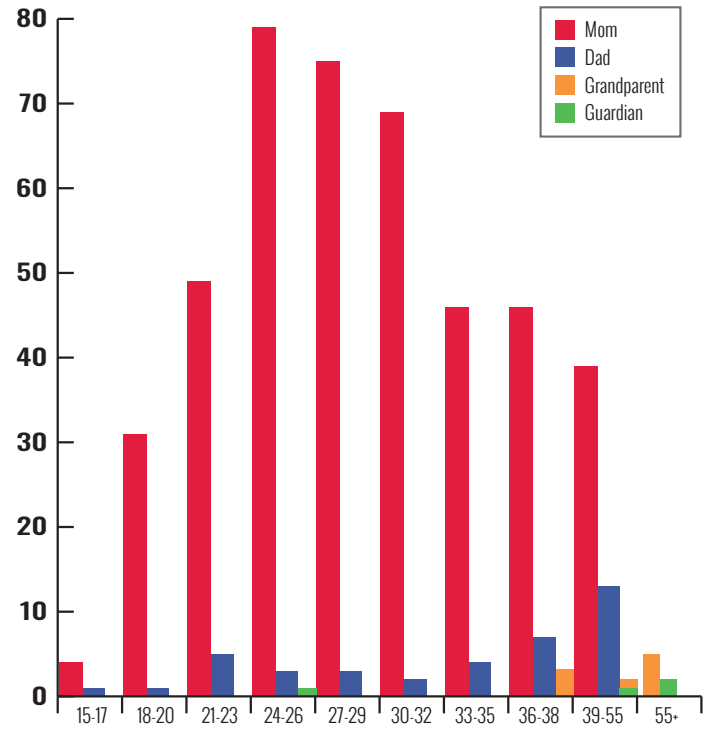
REASONS FOR ADMISSION



THANKS TO OUR VOLUNTEERS & SUPPORTERS THIS YEAR WE HAVE:



AGE RANGES OF PARENT/GRANDPARENT/GUARDIAN



FREQUENCY OF VISITS OVER THE YEAR





Jessica's Story



Late last year, we had the opportunity to sit down for an interview with Jessica, a past Kottage kid. Throughout our interview with Jessica, she shared the experiences she had as a child that led her to the Kottage, and the memories she has of the Kottage. Below is a paraphrased recap of our conversation.

Jessica came to Kids Kottage for the first time when she was seven years old.

“I was basically being a parent at seven. I was very independent; I walked myself to school, from school. I had my own key to the apartment. I was naive to a lot of things, but I did know that if an adult had found out that my parent wasn’t doing her job then she would get in trouble.

Whenever my mom did have a job and she wasn’t depending on the government for funding, it was typically a restaurant job. She would bring home food from the bar - either poutine or a burger, and [her, my brother and I] would all share it. Looking back as an adult at that, it is pretty scary.”

During that time, Jessica recalled a family member doing something horrible to her, putting additional strain on familial support. Not long after Jessica’s traumatic experience, her family began to fall apart.

“My mom went into a deep spiral because that person was very important to her. It broke our family apart and made it hard for us to be together. Because of that, she had no support system... A month later was my first time coming to Kids Kottage. I remember it was a couple of nights. My mom was struggling with drug habits, and she was not really making the right choices in her life to be a proper parent... I think the time my brother and I were at the Kottage served as a time for her to take care of herself, and figure things out.

Kids Kottage doesn't just have the nice feeling when you're there. It makes you feel like there is something more than just what your current circumstances are. It gave me hope. It made me believe that there was a much better way of living. I saw the way other people lived... I knew where I was in the societal structure, and I knew it was not where I wanted to be.

Kids who are going through rough times need Kids Kottage, they need that break. My life would definitely be different if I had not come to Kids Kottage because I would not have had that break from the reality of that day and age and the circumstances we had throughout that time. For me, it was everything. I have remembered [my time at Kids Kottage] all throughout my life.

Because of Kids Kottage, I got hope. That hope has stayed with me throughout the whole process, and because of that, I will always cherish the moments I had at Kids Kottage."

Jessica is the reason we do what we do, and it's stories like hers that perfectly exemplify the heart and the purpose behind Kids Kottage - keeping infants and children safe.

Head over to kidskottage.org/jessicasstory to watch our entire conversation with Jessica.

What do you like about Kids Kottage?





Continuing the support



As we came to the end of our fiscal year, COVID-19 hit full force. On March 15, 2020, we had to close the doors of the Kottage following the guidance of Alberta Health Services and Dr. Deena Hinshaw, in an effort to prevent the spread of the virus and keep our children and staff safe. However, that did not stop us from serving our community and doing all we could to protect the well-being of our community's most vulnerable. Our crisis line remained open 24/7, and our follow-up worker was in contact with any families in need throughout the closure. As we move forward into 2020, we will continue to serve the community and be the anchor for families in need during this time of crisis.

We also received tremendous support from our community. We truly would not have been able to continue serving without the support from the Government of Alberta, and our corporate partners, Mammoet, Brookefield and Inter Pipeline. So many others stepped up in a time of dire need including Dustbane who donated over 600 pounds of cleaning products, and community members who donated masks and other PPE gear for our staff.

Board of Directors



Chair
Rajesh Ramakrishnan
Mysteeq

Vice/Past Chair
Dan Peskett
Brownlee LLP

Secretary/Treasurer
Ken Jacques
COAC HO Accounting,
Canada One Auto Group



Directors



Malkit Atwal
Field Law

Sheldon Cardinal
Indigenous Services

Troy Chalifoux
Claims and Indian Government

Patricia Hebert
Bruyer & Mackay LLP

Christina Kaumeyer
RBC Wealth Management

Maryna Korchagina
Alberta Culture,
Multiculturalism Status of Women

Jonathan Lacasse
Grant Thornton LLP

Michelle Plouffe
MacEwan University

Rosanna Saccomani
Provincial Court Judge

David St. Arnault
Glenora Registered Psychologist Inc.

Rod Wales
Ledcor Contractors Ltd.

Mohammad Yahyaei-Moayyed
Entuitive Corporation



*Gratefully thanks our
Earth Angels
and Partners*

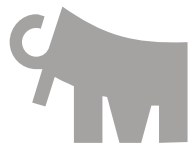




Alberta 
Government

Brookfield
Residential

*The Best Places
to Call Home*



MAMMOET

SMARTER, SAFER, STRONGER



All children have inherent value as individuals and are recognized to have specific rights, established under the 1989 United Nations Convention on the Rights of the Child. Kids Kottage Foundation respects and upholds these specific and inherent rights.



Follow us on
@KidsKottageYEG



Twitter



Facebook



Instagram